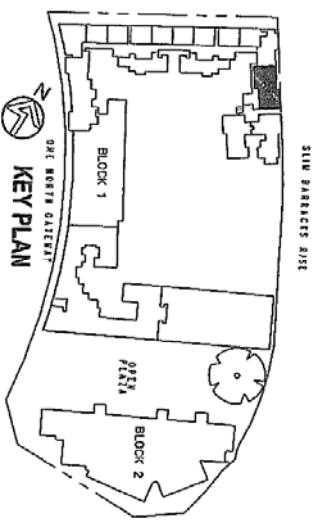
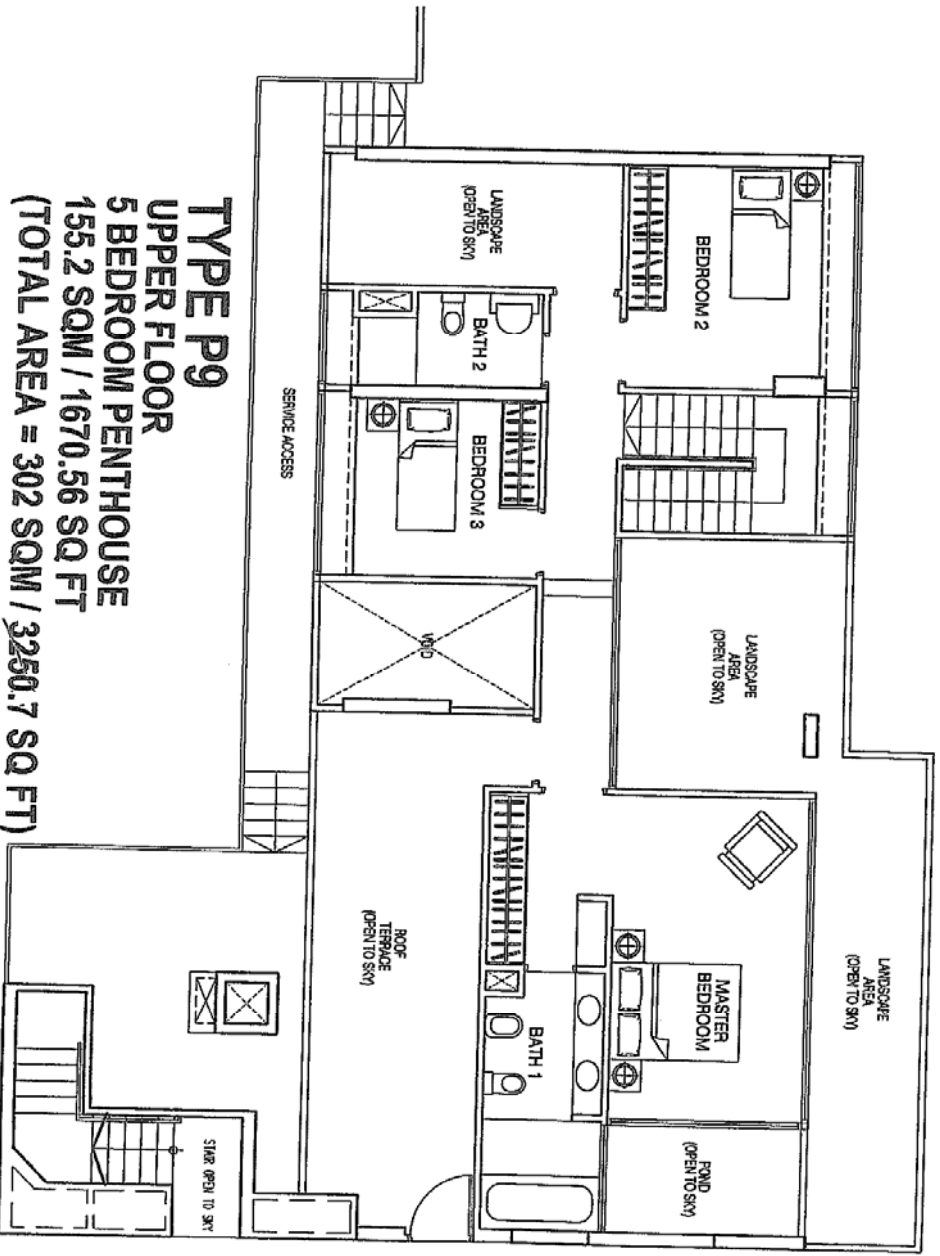


TYPE P9
LOWER FLOOR
5 BEDROOM PENTHOUSE
146.9 SQM / 1581.22 SQ FT



KEY PLAN



TYPE P9
UPPER FLOOR
5 BEDROOM PENTHOUSE
155.2 SQM / 1670.56 SQ FT
(TOTAL AREA = 302 SQM / 3250.7 SQ FT)